



***WE ARE COMMITTED TO YOU!***



The background of the slide is a photograph of a modern office interior. Several employees are seated at desks, working on computers. The office has large windows that offer a view of a city skyline and a body of water. The lighting is bright, and the overall atmosphere is professional and productive.

***SOUTEC IS AN IT SOLUTIONS PROVIDER  
DEDICATED TO MAKE COMPANIES MORE PRODUCTIVE,  
SECURE AND RELIABLE.***

## *WHO WE ARE*

As a Cisco Partner, we have expertise with Routing & Switching, Wireless Deployments, Cyber Security, Collaboration (IP Telephony, Video Conferencing, Instant Messaging Systems), and Data Center technologies. We provide packaged solutions for your company, starting by designing the solution, selling the equipment, implementing the solutions, and providing support for your infrastructure.

## *HOW DO WE MAKE COMPANIES MORE PRODUCTIVE?*

We guarantee an increase in productivity with the right technology in place, allowing employees to work from anywhere at anytime.

Companies can reduce employees' unproductive travel time: time spent on the road is time lost. A Collaboration solution that offers video calls and web conferencing can help reduce the time and expenditure of travelling to off-site meetings and training sessions. Rather than spending time travelling, use this time to get work done.

## *WHO WE ARE*

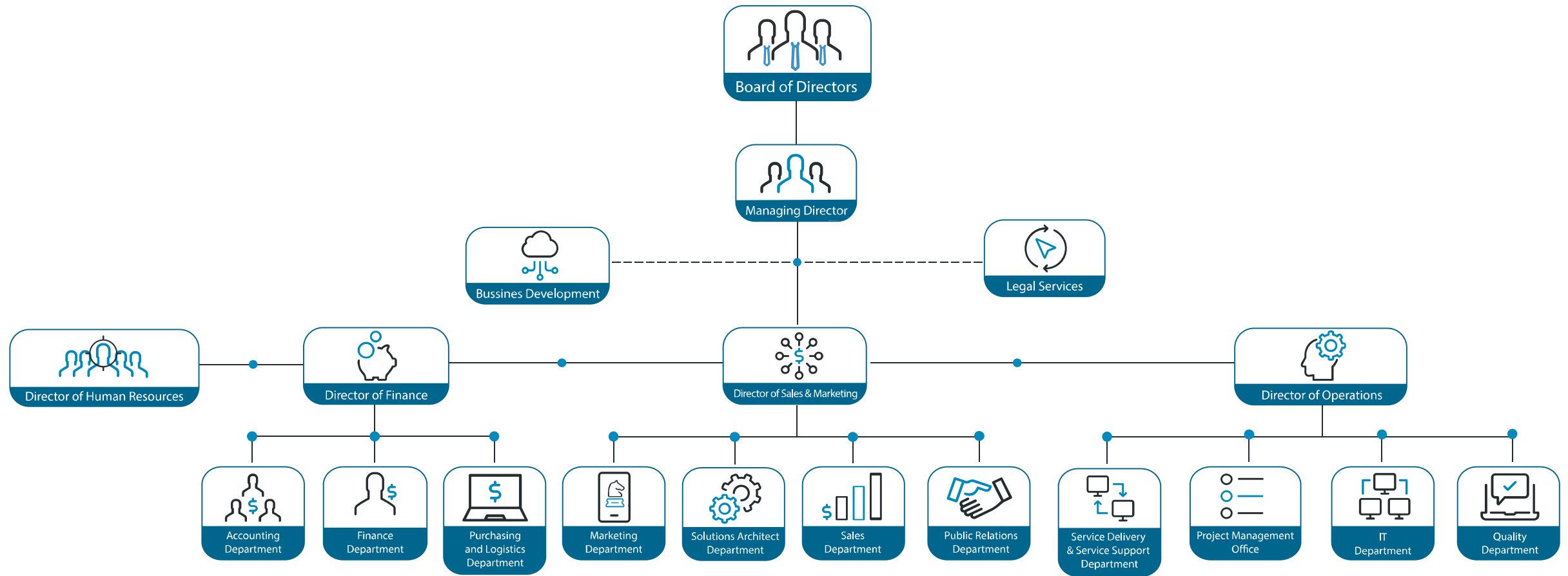
## *HOW DO WE HELP COMPANIES BE MORE SECURE?*

Companies need to be aware that no network is 100% secure. As far as an attack is concerned, nowadays it is not a matter of "if" but rather a matter of "when". That's why Soutec offers an entire portfolio of threat-centric, cybersecurity solutions that provide protection across the full attack continuum - Before, During and After an attack.

## *HOW DO WE MAKE COMPANIES RELIABLE?*

- Once Soutec understands your business' needs, we design a High Availability and Disaster Recovery solution for you.
- Systems designed with High Availability in mind protect against interruptions and prevent outages from happening.
- Disaster Recovery is made up of two parts – first, a Disaster Recovery Plan (DRP). Second, put said plan to work.

# WHO WE ARE





# VISION

Become the most admired technology solutions provider due to its people, its performance, and its contribution to making the World a better place.



## WE ARE COMMITTED TO YOU

Preparation

Planning design

Implementation

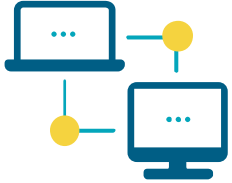
Operation optimization

Regardless of your company's technological needs, our focus is to perform activities on a project management model that allows us to provide you with a series of milestones, which guarantee the overall success of the project.

## BENEFITS

- Lower total cost by thoroughly planning and defining technology requirements, upfront.
- Increase platform availability based on a solid network design and validating its operation.
- Improve overall business agility.
- Optimize speed to access applications and services by improving the availability, reliability, security, scalability, and performance of the platform

# SOLUTIONS



## NETWORK INFRASTRUCTURE

The information you need. Everywhere, reliable and safe.



## COLLABORATION

Work closer to your team. Anytime, anywhere.



## DATA CENTER

Merges systems, storage, networks, virtualization and management functions into a single platform.

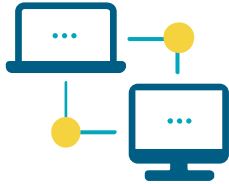


## CLOUD

Quick, optimal and efficient solutions without large initial investments.



# SOLUTIONS



## NETWORK INFRASTRUCTURE

- Routing & Switching
- Wireless
- Cyber Security



## COLLABORATION

- IP Telephony
- Unified Communications
- Video Conferencing and Telepresence
- Auto-attendants and Call-Center Solutions
- Collaboration (impromptu meetings, presentations, content-sharing)



## DATA CENTER

- Design
- Racks, structured cabling, and power supply
- Servers
- Data Storage
- Networking Equipment
- Software
- Virtualization
- Cyber Security Hardware
- Disaster Recovery

# SOLUTIONS



## CLOUD SOLUTIONS

Soutec's cloud solution offers a new way to manage your business by providing IT services through hardware, virtualized applications, software, and networking services that are hosted in geo-redundant datacenters in the Cloud.

Unlike traditional environments where you own and actively manage your infrastructure and resources, a Cloud solution enables you to lease those resources while reducing your upfront investment and eliminating future hardware upgrades.

This includes:

- Assessments
- Backup as a Service
- Disaster Recovery as a Service
- Co-location Hosting
- Desktop as a Service
- Collaboration as a Service
- Wireless as a Service

# SERVICES



## BoH

Block Of Hours are designed to meet your needs in your day-to-day operations or on specific projects.



## MANAGED SERVICES

We provide a complete solution to support your infrastructure including up to 24x7 monitoring, preventive maintenance, reactive maintenance and management.



## DISCOVERY ASSESSMENT

We analyze and identify possible points of failure, in order to optimize your operations.



With a Block Of Hours package from Soutec, you can pre-purchase service hours which can be used for any of the services we offer including project management and consultancy for upcoming projects. Soutec's 24x7 Service gives small businesses access to our Network Operation Center through a simple phone call or email.

At Soutec we understand how important it is for you to track the hours of your service requests. Because of this, time is accurately monitored for each use of the Block Of Hours purchased, providing you with a statement for each support-activity performed, the number of hours consumed, and the number of hours remaining under the current contract.

### Additional Benefits

- 24x7 Help Desk availability
- Manage and control your IT budget
- Access to our highly-specialized and certified IT staff
- Discounted hourly rate
- Pre-paid Block of Hours available in packs of 10, 20, 40 and 100 hours





Managing your organization's IT is a complex, full-time job. Every device and piece of technology throughout your infrastructure needs to be carefully monitored and tracked to ensure it is operating correctly and aligned with your IT strategy.

Soutec's Managed Services delivers up to 24x7 proactive monitoring and support to help your business achieve peak performance while mitigating risks. We manage day-to-day operations, provide detailed analytics and information so your in-house team stays informed while also focusing on projects that make your organization grow.

Soutec's Network Operation Center is the foundation for our Managed Services. With over 25 certified engineers specializing in different technologies which allow us to closely monitor your network's health, ensuring that applications, hardware, servers, bandwidth, security, and other technologies work as expected - your business continues to run smoothly and efficiently. Should any performance issues or network outages emerge, our NOC is available to quickly detect, diagnose, and resolve problems, resulting in reduced downtime, improved security, and enhanced productivity.

## Benefits of Managed Services

- On-boarding - Discovery Assessment
- Management
- 24x7 monitoring
- Preventive and reactive support
- Monthly reports
- Decreased downtime
- Increased operational efficiency and security
- Certified Engineers in all Technologies



# DISCOVERY ASSESSMENT



Soutec's Network Operation Center helps companies reduce risks by utilizing technology assessments that examine your environment and identify potential technology-centric issues.

Once the assessment is complete, we provide a fully outlined report and work with you to arm your company with the knowledge you need to create a technology plan aligned with your IT strategy.

Our expertise and strong partnership with major technology vendors allows us to bring you the following assessments:

- Network Assessment
- Cyber Security Assessment
- Wireless health check Assessment
- Unified Communication Assessment
- Data Center Assessment

# WHY SOUTEC?

## **WE ARE COMMITTED TO YOU!**

Our company focuses in the quality of service given to our clients. Our mission is to create a positive impact in the lives of our clients, employees, and community.

## **OUR MAIN OBJECTIVE IS TO UNDERSTAND YOUR BUSINESS' NEEDS!**

Once we understand your needs we can create an IT strategy. Soutec has worked with different business verticals, each with their own infrastructure, compliance, regulations, security requirements, and overall needs. We understand the criteria that is needed to be met in order to ensure successful planning, integration, migration, upgrades, support, and operations.

## **THE REAL POWER LIES IN THE INTEGRATION OF PEOPLE!**

Our projects succeed because our engineers work with and for our clients. We employ professionals who are not only brilliant at technology but are also exceptional at understanding our clients' needs, values, and guiding principles. It's this combination that drives successful projects.

## **...BECAUSE WE GROW TOGETHER!**

Our company is focused on your company's success, productivity, and growth and we are here to help you achieve your goals.

# SOME OF OUR CLIENTS

LIBERATOR<sup>™</sup>  
MEDICAL

Coca-Cola

Hilton  
HOTELS & RESORTS

MERCON

Carousel  
INDUSTRIES®

DOSAL  
EST. 1962 ■ MIAMI, FL

BD

Goodwill  
South Florida

BANC TRUST & CO.  
INVESTMENT BANK

BAIRD

nationshearing

Productora  
panorama

DELL' ACQUA

FlexOffers

ACTIVO  
International Bank

GENOVESE JOBLOVE & BATTISTA  
BUSINESS & TRIAL LAWYERS

NATIONAL MOLDING

DHL

EAC

SAFO

## PARTNERSHIPS



Meraki



Acronis

veeam

vmware®

purple®

 exabeam



solarwinds 





## ***CONTACT US***

[990 Biscayne Blvd STE 501, Miami, FL 33132.](#)

Office: [+1 \(305\) 928 6098](#)

*...because we grow together!*

